

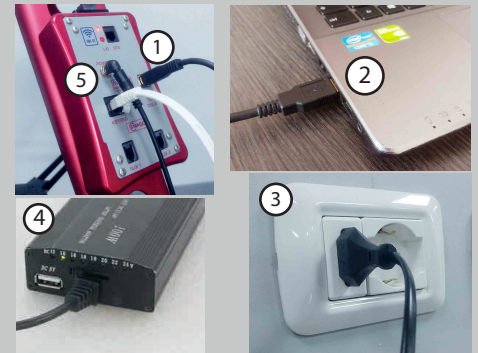
# EVO-ZERO QUICK START GUIDE

The following fundamental 4 steps, must be set at least one time by using a Windows based PC and it is required only during the first mount setting

We strongly suggest to read carefully the StarGo User Manual and the Mount User Manual

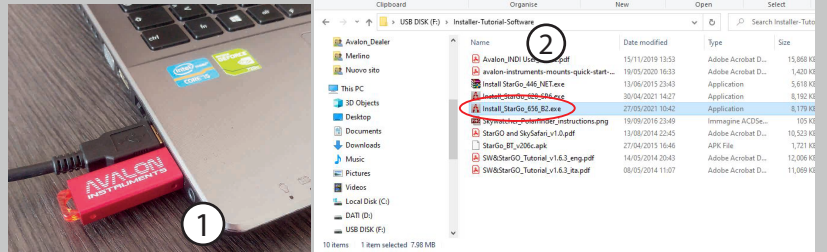
## Step 1 Power On the StarGo

- 1 & 2 - Connect the StarGO to the PC by using the provided USB cable
- 3 - Connect the provided power supply to the the home power outlet
- 4 - Check that the power supply output it is set on 15v
- 5 - Connect the power supply to the StarGo board



## Step 2 Install the StarGo Software on the Pc

- 1 - Insert the provided USB Pendrive in the PC USB port
- 2 - Install the **Installer\_StarGO\_XXX.exe** that comes with the provided pendrive  
(The installer file it is located inside the **Installer-Tutorial-Software** Folder)



## Step 3 Launch the StarGo Software

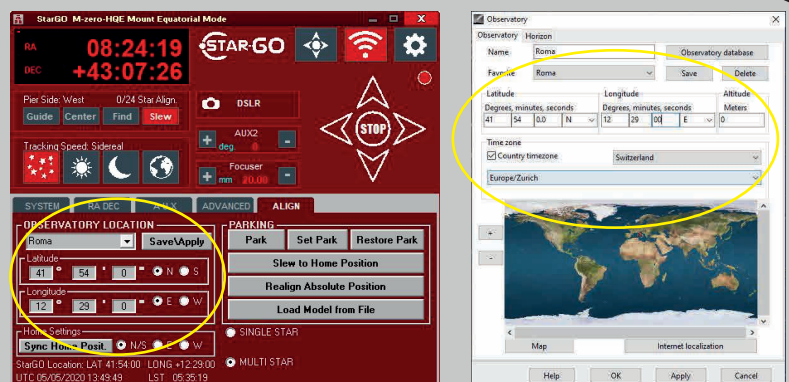
- 1 - Double click on the StarGo.exe software icon
- 2 - Click on the gear button
- 3 - Select the connection mode (USB, Bluetooth or Wi-Fi)  
**NOTE:** to establish a wireless connection the device must be first paired with the StarGo board. See StarGo User Manual from page 47 to page 52
- 4 - The mount comes already configured from the factory (check in the ADVANCED panel)
- 5 - Check that the "Motors Always ON (EVO-zero)" option is correctly enabled in the RA DEC panel



## Step 4 Set your Observatory Location

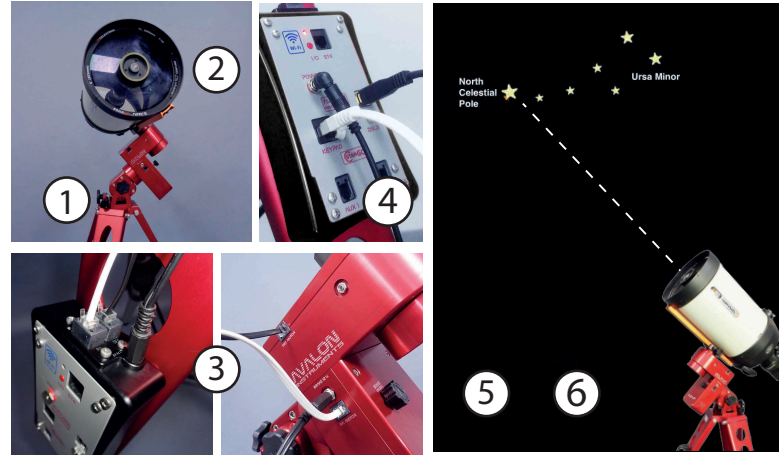
Click on the ALIGN panel and set your **OBSERVATORY LOCATION** coordinates.

**NOTE:** in order to have the correct mount behaviour, any other software (planetary, sequencer etc.) must have the same coordinates system



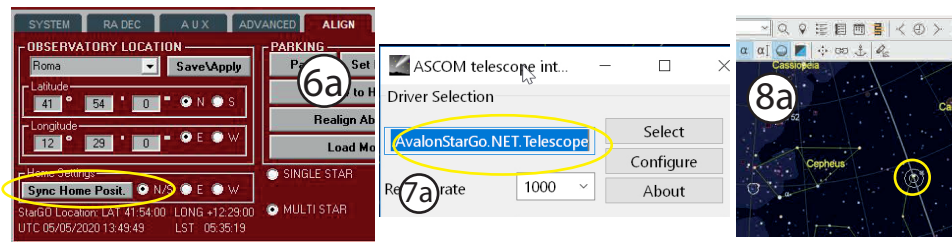
# QUICK SETUP FOR MOUNT USAGE

- 1 - Install the tripod and the mount
- 2 - In case of unbalanced setup, in order to safely assemble the telescope on the mount, is suggested to put the tube pointing to east with approximative DEC 0°.
- 3 - Connect the Brake Safety System cable and the RA-DEC cables.
- 4 - Power on the StarGo
- 5 - Put the telescope in HOME position, CWD and telescope pointing to the NORTH (SOUTH in case of Southern emisphere)
- 6 - Perform the Polar Alignment



## IN CASE OF USE WITH STARGO AND PC

- 6a - Launch the StarGo and perform a Sync Home Position
- 7a - Launch your planetary software and connect the Telescope with the AvalonStarGo.NET.Telescope driver
- 8a - Now the mount is roughly aligned with the sky and the pointer will show the Celestial Pole. In order to have a more accurate pointing, further Sync are required.



## IN CASE OF USE WITH MOBILE DEVICES

- 6b - Connect the device (tablet/smartphone) via Wi-Fi/Bluetooth to the StarGo.  
*The pairing operation must be already done and it is only required one time, see StarGo User Manual starting from page 53 to page 56*

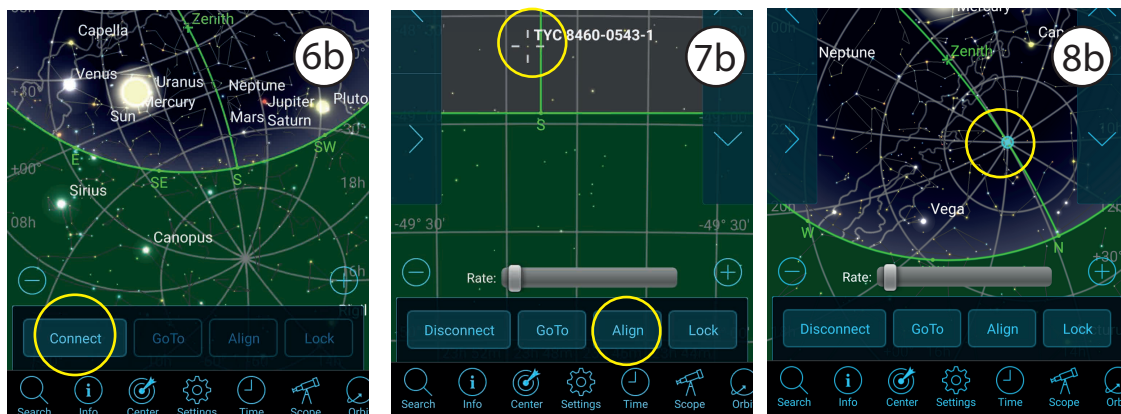
**Default Wi-Fi password: avalon1234**

- 7b - Launch SkySafari and connect to the mount.  
*Since the mount alignment procedure (Sync Home Position) is not available on SkySafari and on other planetary app, Avalon Instruments developed a solution to solve this missing important function. Simply perform the following steps.*
- 8b - Choose a star close to the Southern Meridian and to the Horizon, then perform a Sync on it, **without move the mount from his Celestial Pole pointing.**

In this way the StarGo use the Star position as a Sync Home Position and not as an Align.

- 9b - Now the mount is roughly aligned with the Sky. The pointer will show the telescope position on the Celestial Pole, where the mount is effectively pointed. In order to have a more accurate pointing, further Sync are required.
- It is possible to find more detailed information about this important function on the StarGo User Manual, starting from page 57 to page 67.

*The below images show the function performed with SkySafari but it also works with any other planetary app and PC softwares.*



For any other information or suggestion follow us on our website, our social media profile:  
twitter.com/avalon\_instr, facebook.com/avalon.instruments01 or contact us at: info@avalon-instruments.com

# ENJOY YOUR MOUNT!

