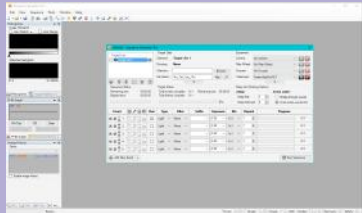
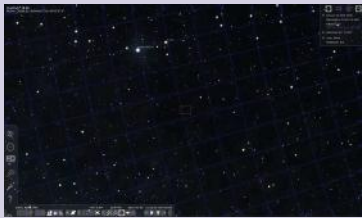


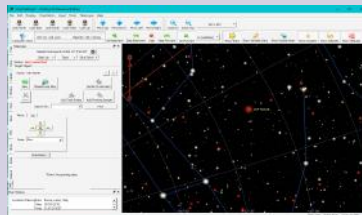
## Windows PC



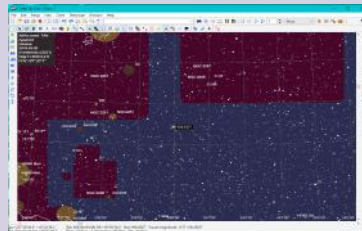
Sequence Generator Pro



Stellarium



The Sky X



Sky Chart



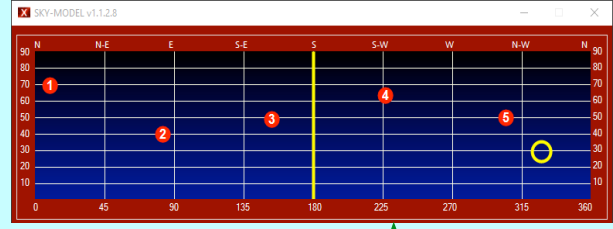
Sky Safari

## Macintosh

# StarGO Software Suite



Performs:  
Automatic Sky Modeling with N stars alignment  
( $1 < N < 16$ )



Performs:  
Mount Operation management  
Communication Management  
Aux devices Management (focusers, cameras, rotators, etc.)

StarGO M-zero Mount Equatorial Mode

RA: 15:36:00  
DEC: +86:34:06

Pier Side: East Single Star Align. DSLR

Guide Center Find Slew

Tracking Speed: Sidereal

Unnamed mm 0  
Unnamed mm 20

STOP

AVALON LINEAR TRANSFORMS

PLATE SOLVING MODELS SETTINGS

Model Name

CLEAR POINTS ON SKYMODEL

START NIGHT SESSION

LOAD SAVED MODEL FROM FILE

SEND MODEL TO STARGO

01 SKY MODEL

Observatory Location: Latitude 41° 27' 07" Longitude 12° 54' 30"

Performs:  
Automatic plate Solving and Automatic Polar Alignment (requires Polar Alignment Kit)

ALIGI STAR	DOUBLE STAR	IC	MESSIER	NGC	
Object	Constel.	Type	RA	Dec	Mag
alpha	And	Alpheratz	00h 08m 34.4s	+23° 06' 48"	2.1
beta	And	Mirach	01h 09m 56.4s	+35° 38' 38"	2.1
gamma	And	Almach	02h 04m 08.0s	+42° 21' 07"	2.1
alpha	Aur	Sadalmelch	22h 05m 57.7s	-00° 18' 10"	3
beta	Aur	Sadalraud	21h 31m 44.4s	-05° 32' 23"	2.9
alpha	Aid	Alar	19h 50m 56.7s	+08° 52' 35"	0.8
gamma	Aid	Alshain	19h 46m 25.0s	+10° 37' 14"	2.7
alpha	Ari	Homal	02h 07m 23.3s	+23° 28' 59"	2
beta	Ari	Sheratan	01h 54m 51.1s	+20° 49' 44"	2.6
alpha	Aur	Capella	05h 16m 59.9s	+45° 00' 18"	0.1
beta	Aur	Menkalinan	05h 59m 50.3s	+44° 57' 00"	1.9

Performs:  
Star and Sky Object Data Base Management

SYSTEM RA DEC AUX ADVANCED ALIGN

SETTINGS

Select Com Port: COM3

Mount Configuration File

Save Load

Save Screen Position

StarGo Ver. 5.1.42

Firmware Ver. 5.1.6

Ascom Driver V4.8.1.93

Connected Mount Type: M 2000

Axis Mode: Equatorial

AVALON INSTRUMENTS ASCOM

Performs:  
System setting  
Mount Setting  
Parking Operations

USB



USB



## Android



StarGO BT

## iOSX



Sky Safari

### Notes:

- (1) Stellarium, The SkyX, Sky Chart communicate via USB (Ascom and LX200), via Bluetooth and via WiFi.
- (2) SGP communicates via ASCOM only.
- (3) Other Planetarium programs, such as Starry Night, can be used with ASCOM or LX200.
- (4) The StarGO Software Suite is not usable on Macs under MACOSX. However the StarGO HW can be operated by Planetarium programs running under this operating system.
- (5) StarGO BT communicates via BT on Android devices only.
- (6) Sky Safari communicate via WiFi and BT on Android and WiFi only on iOSX devices